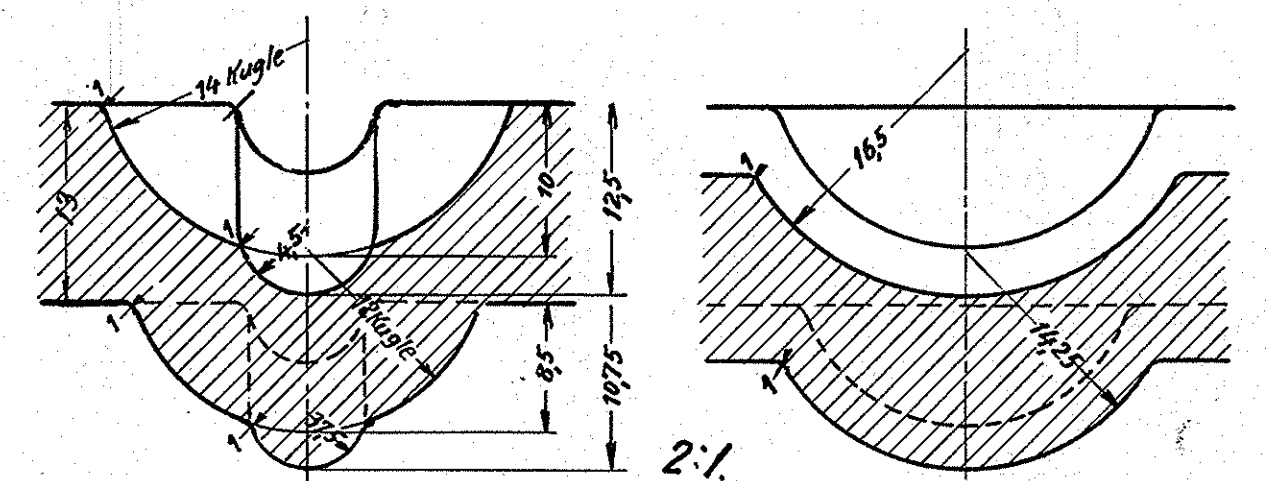
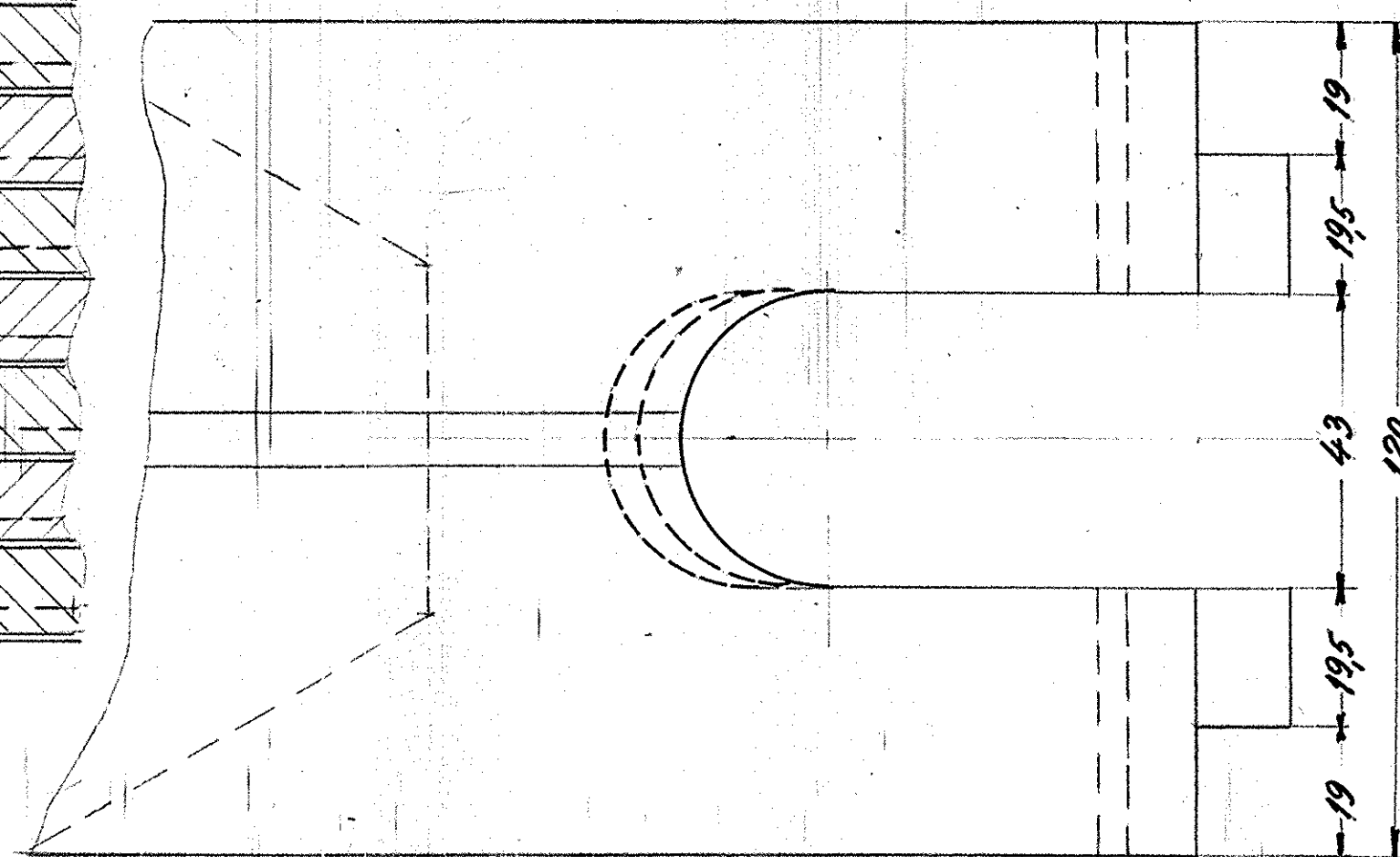
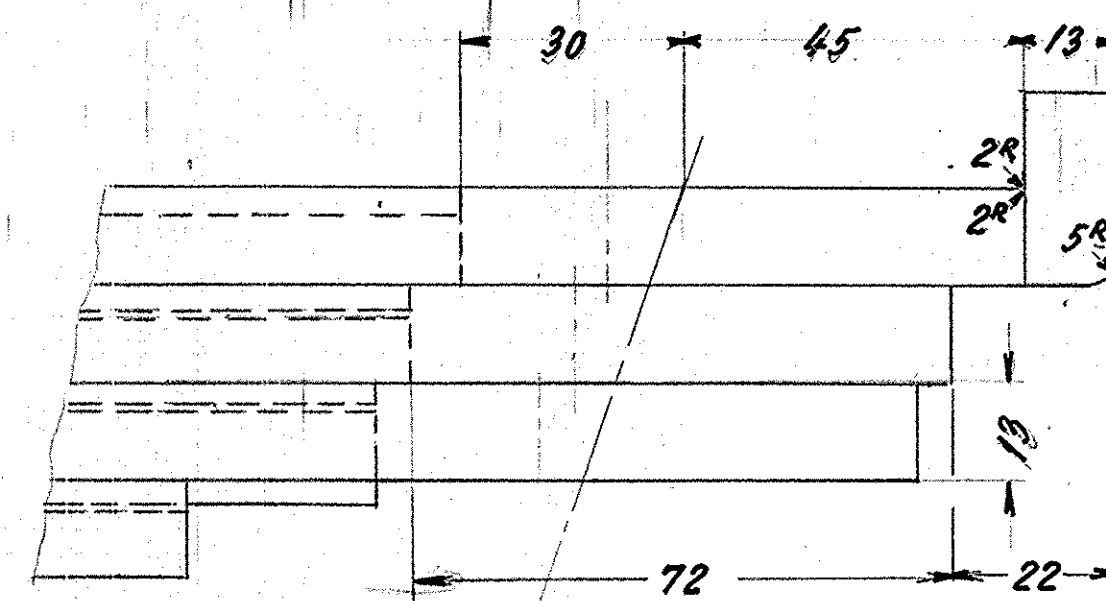
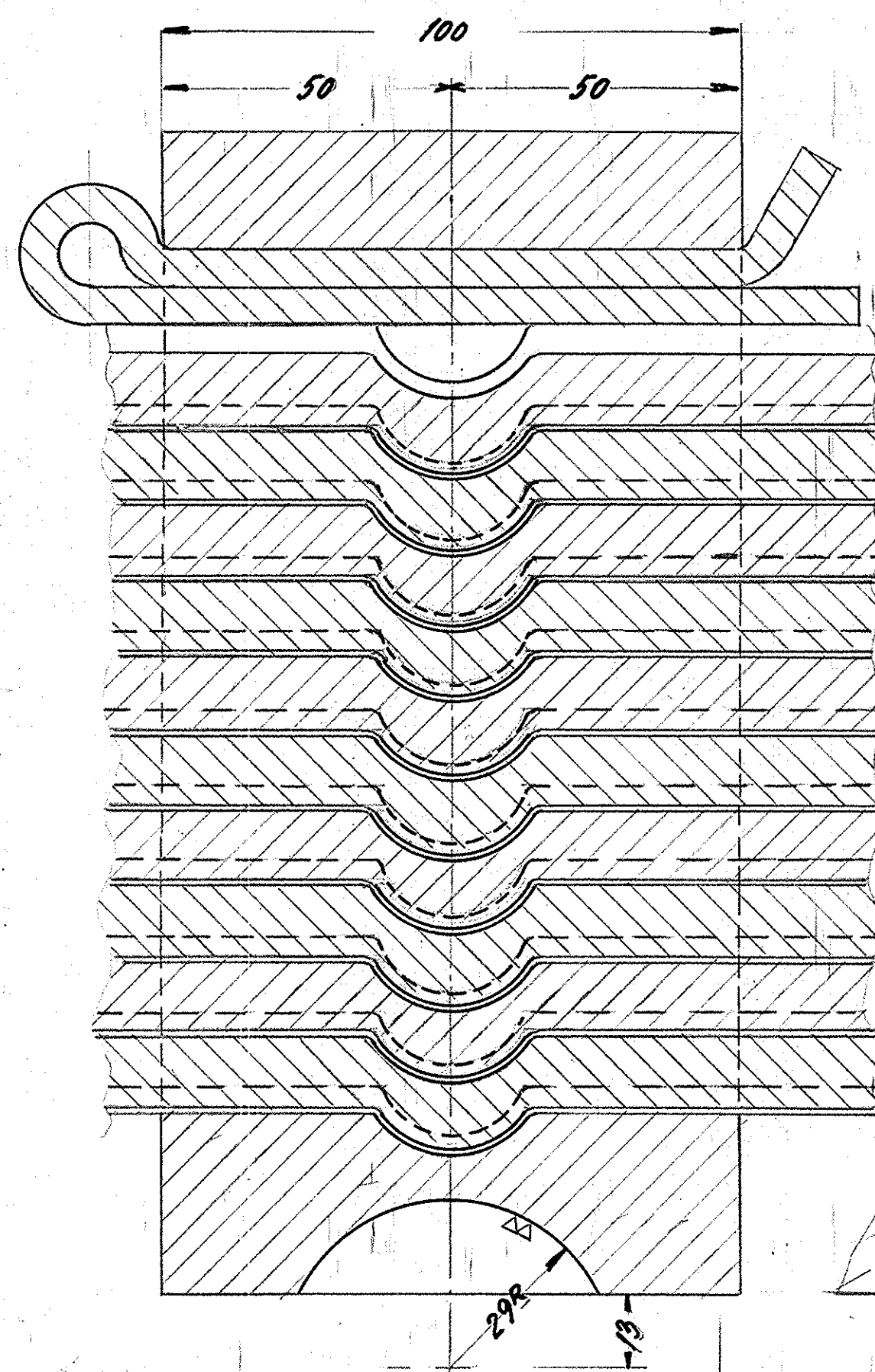
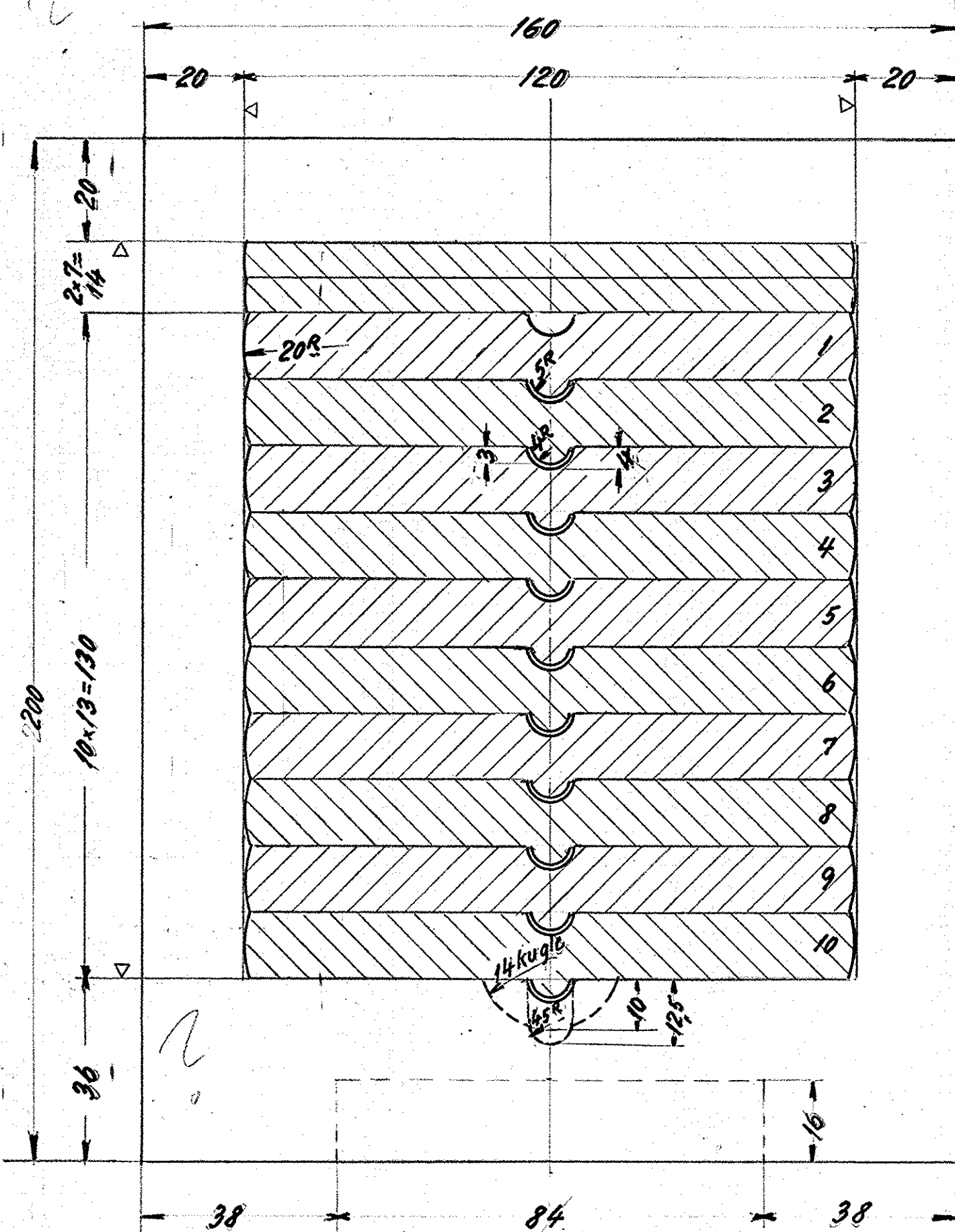
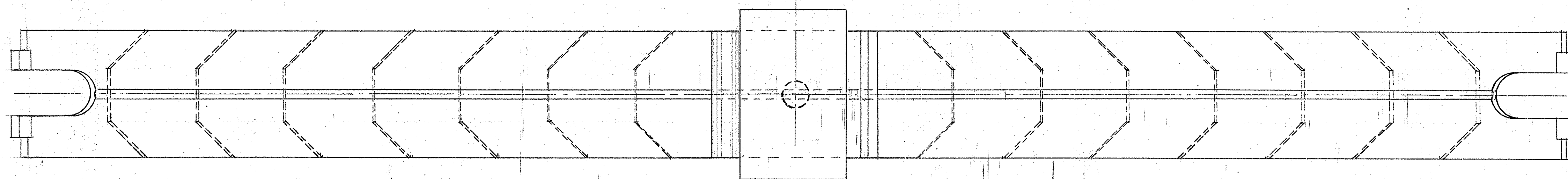


fjederen prøves med en belastning på 1123 kg \approx 1,5 \times normal belastning
 spring to be tested with a load of 1123 kg \approx normal load \times 1,5.



DIN. 1571.



Length of leaf stretched

Udstr.	bladlængde
nr 1	1540 mm
" 2	1470 -"
" 3	1470 -"
" 4	1318 -"
" 5	1150 -"
" 6	982 -"
" 7	812 -"
" 8	642 -"
" 9	472 -"
" 10	300 -"
Talt	10166 -"

* Ifølge Danske Statsbaners betingelse af Marts 1951.

1 fjeder komplet		1 fjeder sidst + kpbcs	
stk.	Betegnelse	Pos	Materialitet
			Materialitet Model nr. eller ra. færd
regn	FP.	rev	Norm
kont		dat	IL 101
dato	retelse	dato	25-5-54
			Hårestak 1.25 og 1.1
		FRICHS	
Anvendelse		Symbolet nr	
Diesel-el. 1500hk. lokomotiv.		15301	
Tegningens benævnelse		Tegningens nummer	
Akselkassefjeder		305L-11.320.	